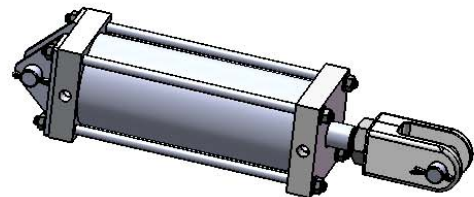
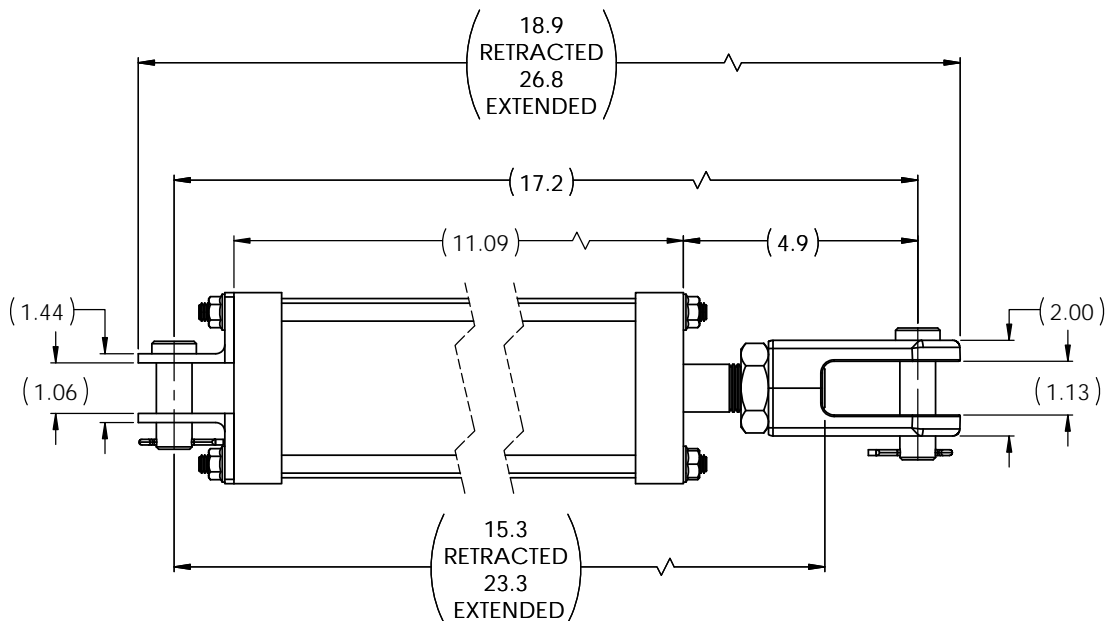
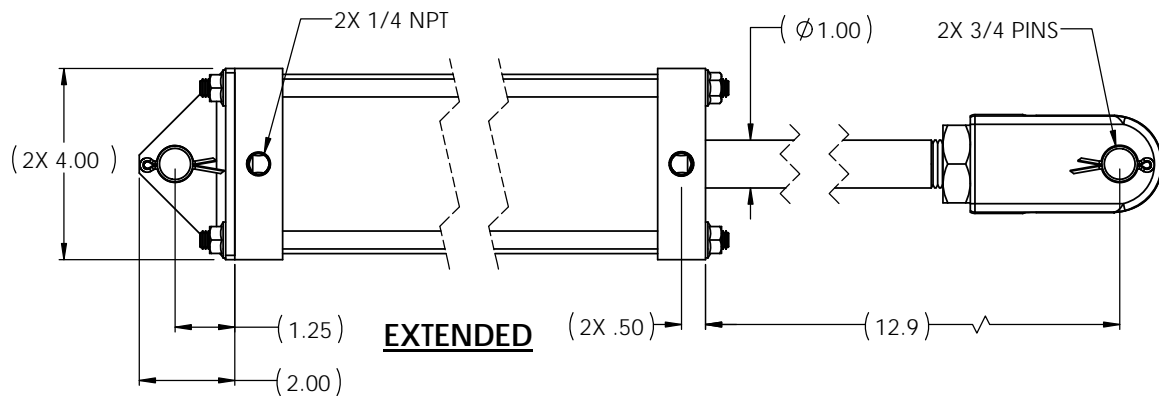


REVISIONS				
ECR	REV.	DESCRIPTION	DATE	CHG BY
E2996	A	See Sheet1	02/11/2016	RR



PORTS ON SIDE

BORE = ϕ 3.5
 STROKE = 8.0
 RETRACTED PIN TO PIN = 17.2
 EXTENDED PIN TO PIN = 25.2
 EXTENSION FORCE @ 100PSI = 962 LBS
 RETRACT FORCE @ 100PSI = 884 LBS

ASSEMBLY DO NOT SCALE DRAWING UNLESS OTHERWISE SPECIFIED DIMENSIONS ARE IN INCHES TOLERANCES ARE: .X = \pm .06 .XX = \pm .03 .XXX = \pm .010 ANGLES = \pm 2° $\sqrt{6.3}$ SURFACE TEXTURE OR BETTER	PROPRIETARY AND CONFIDENTIAL THE INFORMATION CONTAINED IN THIS DRAWING IS THE SOLE PROPERTY OF APSCO Inc.. ANY REPRODUCTION IN PART OR AS A WHOLE WITHOUT WRITTEN PERMISSION OF APSCO Inc. IS PROHIBITED.	TITLE: CYL 3.5 X 8 DA 16NS BR PK	
		DWG. NO. C-6096-PK	
		MATERIAL: N/A	FINISH: N/A
TYPE OF PROJECTION THIRD ANGLE PROJECTION SHEET SIZE B	DRAWN: RR DATE: 1/26/2016 CHECKED: DJ DATE: 1/26/2016 APPROVED: FH DATE: 1/26/2016 FINAL: FH DATE: 1/26/2016		
		REV A	
		F/N: C-6096-PK)A	
		SHT. 2 OF 2	