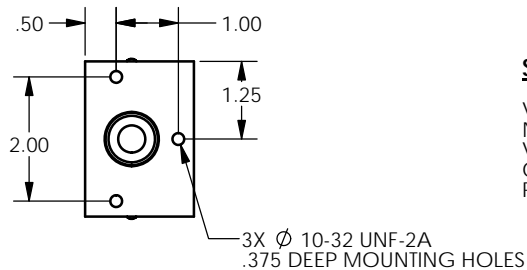
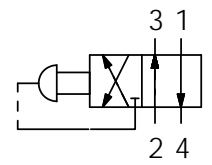


REVISIONS				
ECR	REV.	DESCRIPTION	DATE	CHG BY
E2798	-	See Sheet1	09/30/2015	RR

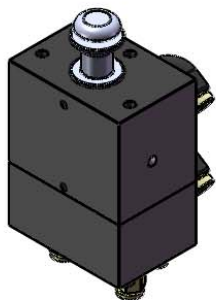
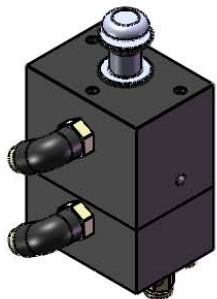
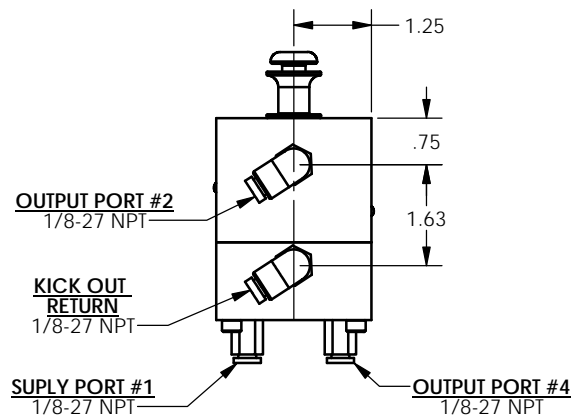
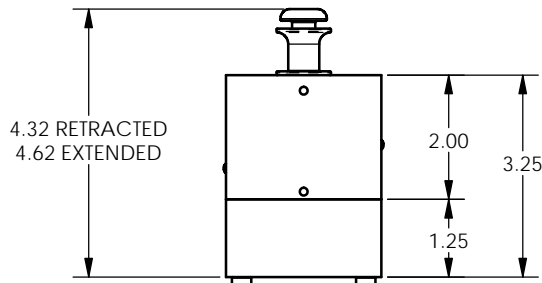
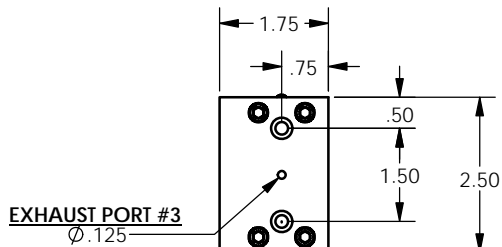


SPECIFICATIONS:

VALVE TYPE PUSH/PULL, 4 WAY, 2 POSITIONS
 NUMBER OF PORTS 4
 VALVE OPERATOR PUSH/PULL
 OPERATING RANGE 0-150 PSI
 RESET POSITION KICK OUT RETURN



VALVE SCHEMATIC
 NORMALLY OPEN TO PORT #4



<p>ASSEMBLY DO NOT SCALE DRAWING UNLESS OTHERWISE SPECIFIED DIMENSIONS ARE IN INCHES TOLERANCES ARE: .X = ±.06 .XX = ±.03 .XXX = ±.010 ANGLES = ±2° SURFACE TEXTURE OR BETTER $\sqrt{6.3}$</p>	<p>PROPRIETARY AND CONFIDENTIAL THE INFORMATION CONTAINED IN THIS DRAWING IS THE SOLE PROPERTY OF APSCO Inc.. ANY REPRODUCTION IN PART OR AS A WHOLE WITHOUT WRITTEN PERMISSION OF APSCO Inc. IS PROHIBITED.</p>		<p>TITLE: VALVE (4 WAY) TOP MT LOCK</p>	
	<p>DRAWN RR DATE 10/12/2015</p>		<p>DWG. NO. V-8-S-LK</p>	
	<p>CHECKED DJ DATE 10/12/2015</p>		<p>MATERIAL N/A FINISH N/A</p>	
	<p>APPROVED FH DATE 10/12/2015</p>		<p>REV -</p>	
<p>THIRD ANGLE PROJECTION SHEET SIZE B</p>		<p>FINAL FH DATE 10/12/2015</p>		<p>F/N: V-8-S-LK SHT. 2 OF 2</p>

8

7

6

5

4

3

2

1