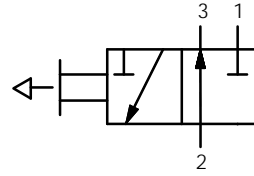


REVISIONS				
ECR	REV.	DESCRIPTION	DATE	CHG BY
E2623	A	ADDED TOP MOUNTING HOLES, SECTION VIEW AND BOM	11/10/2014	JUMPER

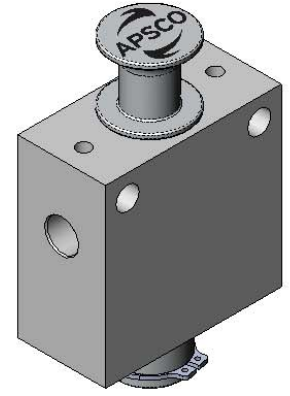
SPECIFICATIONS:

VALVE TYPE
NUMBER OF PORTS
VALVE OPERATOR
OPERATING RANGE

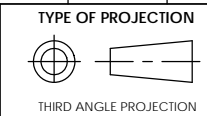
PUSH/PULL, 3 WAY, 2 POSITION
3
PUSH/PULL
0-150 PSI



VALVE SCHEMATIC
NORMALLY CLOSED



ITEM NO.	PART NUMBER	DESCRIPTION	QTY.
1	3274	VALVE BODY V-5 W/ MOUNT HOLES	1
2	1124S	(APSCO) PRINTING ON SPOOL	1
3	1205	O-RING 2-113 3/4 OD 9/16 ID	2
4	1206	SNAP RING, EXT .688 D	1



DO NOT SCALE DRAWING
UNLESS OTHERWISE SPECIFIED
DIMENSIONS ARE IN INCHES
TOLERANCES ARE:
DECIMALS
.X = ±.03
.XX = ±.010
.XXX = ±.005
FRACTION = ±.015
ANGLES = ±1/2°



PROPRIETARY AND CONFIDENTIAL
THE INFORMATION CONTAINED IN THIS DRAWING IS THE SOLE PROPERTY OF APSCO Inc.. ANY REPRODUCTION IN PART OR AS A WHOLE WITHOUT WRITTEN PERMISSION OF APSCO Inc. IS PROHIBITED.

SURFACE TEXTURE OR BETTER
MATERIAL N/A
FINISH N/A

TITLE: VALVE, PUSH/PULL, 3-WAY, 2 POS,			
DWG. NO. V-5		REV A	
SIZE B	DRAWN JUMPER	DATE 01/08/2014	CLASS
F/N: V-8			SHT. 1 OF 1

